

**A RUGGED OFF-ROAD LIGHT, DRESSED FOR LIFE IN THE CITY!**



**A LIGHT FOR ANY VEHICLE**

Genesis effortlessly combines smart looks with high-performance functionality making it the first choice for many different vehicle applications, ranging from 2WD road sedans to commercial trucks. For agricultural service and low speed applications where distance is not a priority, the Genesis Wide Beam throws a huge amount of light, providing optimal uniform lighting for close proximities.

**LIGHTFORCE IS THE LIGHT OF FIRST CHOICE FOR MANY DIFFERENT VEHICLE APPLICATIONS.**

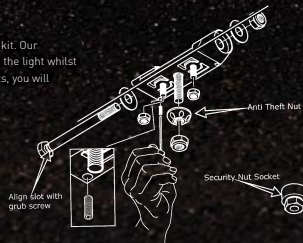


**PROTECT YOUR INVESTMENT**

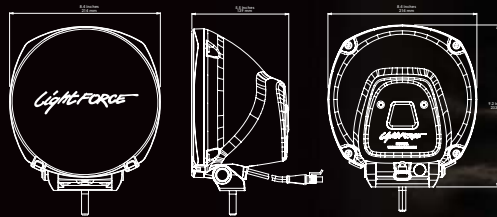
Protect your investment with the optional addition of an anti-theft kit. Our anti-theft bolt mechanism makes it virtually impossible to remove the light whilst mounted, and when matched with a pair of Lightforce security nuts, you will have the most formidable theft deterrent system!

**The Lightforce Anti-Theft Kit includes:**

- **Anti-theft security bolt**
- **Anti twist restraining bolts**  
Prevent the lights from being spun off the bull bar
- **Anti-theft nuts**  
Fit to the bottom mount bolts



**GENESIS**  
MODULAR LIGHTING SYSTEM



**GENESIS RANGE**

	<b>HALOGEN SPOT</b>	<b>SIZE</b> 210mm / 8.5"	<b>WEIGHT</b> 1.1kg / 2lb 6.8oz	<b>POWER</b> 100W
	<b>HALOGEN WIDE</b>	<b>SIZE</b> 210mm / 8.5"	<b>WEIGHT</b> 1.1kg / 2lb 6.8oz	<b>POWER</b> 100W
	<b>HID SPOT</b>	<b>SIZE</b> 210mm / 8.5"	<b>WEIGHT</b> 1.3kg / 2lb 13.85oz	<b>POWER</b> 35W
	<b>HID WIDE</b>	<b>SIZE</b> 210mm / 8.5"	<b>WEIGHT</b> 1.3kg / 2lb 13.85oz	<b>POWER</b> 35W



**GENESIS**  
MODULAR LIGHTING SYSTEM



**A RUGGED OFF-ROAD LIGHT, DRESSED FOR LIFE IN THE CITY.**



# GENESIS

MODULAR LIGHTING SYSTEM

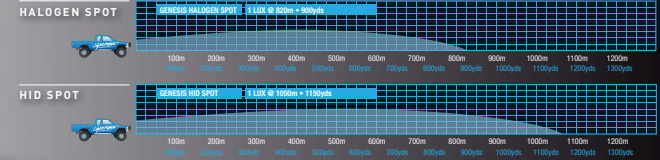
**FORGED IN THE AUSTRALIAN OUTBACK!**  
AUSTRALIAN DESIGNED. AUSTRALIAN MADE.



## LUX, THE REAL MEASURE OF PERFORMANCE

LUX is an ideal real world light measure that is easy to understand, unlike often misleading candlepower claims. Put simply, 1 LUX is sufficient illumination to read a newspaper or to effectively illuminate medium contrast objects such as fauna or road signage.

\*measurement based on 1 light, if installed in pairs the range will increase.



## WITNESS THE REVOLUTION

### WE LISTENED. WE CRAFTED. WE CREATED... A NEW STAR IS BORN!

Tested to destruction in the lab and in the field, Genesis has earned the right to inherit the world's toughest name in Driving Lights. Lightforce Genesis will withstand the earth's harshest conditions. Whether it be punishing outback corrugations, salt water spray, deep water crossings, Arctic ice or Saharan heat, only Lightforce can cope with such environmental conditions.

FORGED IN THE AUSTRALIAN OUTBACK. WELCOME TO LIGHTFORCE COUNTRY.

### THE LATEST INNOVATION IN DRIVING LIGHTS

Genesis offers Halogen & HID Xenon Gas light sources, all housed within the body of the light. This means Genesis not only looks great, but is easy to fit, and won't fill your engine bay with unnecessary clutter.

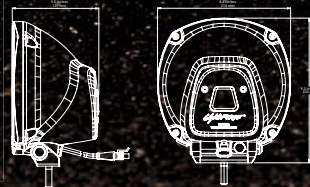
Genesis is available in Halogen and HID models with both spot and wide diffusion patterns. This means that Genesis is the light to suit any environment, for any application and on any vehicle.

#### 15% LARGER REFLECTOR

Professional drivers know only a large diameter reflector can achieve the control to focus a powerful beam to reach the horizon. This is why Genesis has a 15% larger reflector volume than other leading brands.

#### RUGGED AND SLEEK

Lightforce spotlights are renowned for their durability, forged and tested in extreme conditions. Crafted in this tradition, Genesis is a rugged, hard wearing light with contemporary styling. This means Genesis will look as good on a road sedan as it does on the largest of commercial trucks.



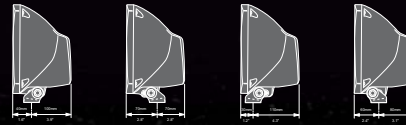
## FREEDOM OF FLEXIBILITY

### THE MOUNTING YOU ASKED FOR

Many people have said that whilst they would love to have the 240mm king of the hill lights on their vehicle, they just don't have the room - that is how the size of the new Genesis light was decided at 210mm - by popular demand!

Genesis boasts a remarkably slim footprint with its unique four position mount, Genesis offers great mounting flexibility with a reversible base mount and double option fixing bolt location. The Genesis light can be mounted with a minimum of just 70mm rear clearance, and has been extensively tested to ensure road corrugations will not shake the light out of alignment on the most rugged terrain. This ensures excellent performance with the convenience of a compact and contemporary design.

GENESIS IS SURE TO FIT ANY VEHICLE WITH 4 ADAPTABLE MOUNTING POSITIONS.



### THE BEAM TO SUIT YOUR TERRAIN



Genesis 210 is available with two reflector styles, spot for maximum distance and wide free form for cornering and low speed work.

The powerful spot beam can be adjusted via an interchangeable Combo lens that combines a spot beam that will shine to the horizon with some spread component that lights out wide to the fence line. This means drivers are not locked into one beam pattern from the time of purchase.

The wide free form reflector provides a broad spread of light with outstanding uniformity that virtually eliminates the bright central peak. Low speed off road work, mountainous terrain or heavily built up wooded country is where the driver will appreciate the safety of the wide free form reflector option.

### THE BEST WARRANTY ON THE MARKET

Lightforce is renowned for the best warranty in the industry - we work hard to deliver lights where rugged strength is matched by a quality of build that leads to a long and reliable lifetime of use. We guarantee all of our sales with a 3 year warranty.



## THE BEST IN IT'S CLASS

With excellent light performance, increased adaptability and backed by a Lightforce 3 year warranty, Genesis is sure to be the light of choice for any environment whether it be off-road driving or commercial trucking. Let us show you why!

### MAXIMISE GENESIS PERFORMANCE POTENTIAL

The quality of the light you see is of most importance, therefore driving conditions, terrain and an individual's eyesight, all play a role in the optimum setup. At Lightforce, we understand this. We give you options for achieving safer night-time driving, be it racing, hauling freight or just getting your family home safely. We recommend utilising a premium quality Lightforce wiring harness and a qualified installer to ensure maximum performance and long-term reliability\*.

\*Please check your local regulations concerning the installation and operation of auxiliary automotive lighting for use on public roads.

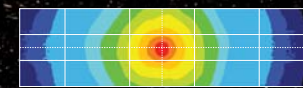
### TRIED AND TESTED

Our lights have been tried and tested independently. Genesis has out performed in a variety of categories, supporting our testimony that Genesis should be considered the best in its class. The results speak for themselves.

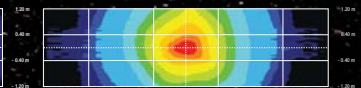
#### Isolux Illuminance in Vertical Plane



#### GENESIS HALOGEN SPOT



#### GENESIS HID SPOT



#### GENESIS HID WIDE



#### THE RESULTS

Independent testing by respected Australian magazine, Overlander 4WD outperforming all rivals, Lightforce Genesis 210 produced the highest intensity of all Halogen Lights on test, and the leading performer in the integral HID ballast class. Once more, Lightforce sets the performance benchmark.

NOTE: These tests have been extracted from the public domain and were created on a Goniophotometer to scan the pattern of the beam, producing an isolux plot that graphically represents the beam distribution produced by a single (one) light. The red centre indicates the peak intensity of the beam, the cool blue areas show the extent of the distribution.